

## News from REACT Services

Summer 2010

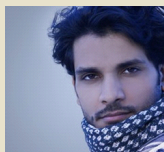
*REACT Services assists churches, businesses and organizations in collaborative strategies for greater Kingdom impact, primarily among the vulnerable and unreached.*



### Collaboration with IMPACT

It never gets old. No matter how many stories I hear, or how many leaders I have the privilege of serving, – it just never gets old. The Lord constantly reminds me of His tremendous creativity in intersecting the unreached, the vulnerable, and collaboration among Christians that lead to greater impact for the Kingdom.

For example, some of you might be familiar with the story of "Ahmed." Born into a Muslim family in Iraq, Ahmed resisted teachings that contradicted his Muslim faith – including Christianity – throughout his upbringing. He married and became a school teacher in his northern Iraq village. At the onset of the Iraqi war, and the tumult that engulfed his town, Ahmed fled his homeland as a refugee seeking political asylum.



Vulnerable and on the road, he and his family came in contact with a variety of refugee ministries during his passage through Jordan to Athens, and eventually to Amsterdam where they settled. Valued as a person, Ahmed found that the refugee workers were far more than just do-gooders handing out food and blankets. They were genuinely there to help in all aspects of his family's life.

Slowly, his heart began to warm to the message of Christ, not just because it was preached, but because the gospel was shown and demonstrated. He went to Christian centers that offered meals, clothing, showers, language training, and programs for his children. In addition, he saw that the different people and groups he had met along the way, knew of, and even spoke well of each other. As a refugee, lost in the world of war and flight, Ahmed – and then his family – found Christ.

You would think that over the six years of REACT's history, stories such as this would become old and commonplace. The truth is – they just don't. God is at work and we are privileged to come alongside what He is doing. From refugees to children, from those being persecuted to least reached peoples, we are seeing collaboration that produces Kingdom results!

REACT's purpose is to make it possible for people like Ahmed to find both a warm blanket on the refugee road as well as an opportunity to respond to the love of Jesus. Our aim is to multiply and leverage the work of many organizations into a collaborative "current of ministry." Together we can accomplish far more than any one group can do on their own.

See below a few project reports from the past six months. Thanks so much for your partnership with us!

Brian O'Connell  
President

### Refugee Highway Partnership

It has been a very intense few months of activity in 2010 for the Refugee Highway Partnership (RHP), a global network that convenes and coordinates churches and ministries serving the world's 50 million displaced peoples. Regional network meetings were held in Europe, the South Pacific, and the Middle East, as well as a global Refugee Roundtable held, May 19-22 in Ephesus, Turkey.

REACT helps these gatherings to catalyze more work together in mobilizing the local church to the outreach opportunity that refugees present all over the world. The RHP assists the church in providing a "welcoming" attitude and approach to people often at the margins of our cultures. For example, the Global Refugee Roundtable event saw a new collaborative task group formed focused on refugee children and a regional network for South East Asia proposed.

In addition, this past June 20th and 27th, World Refugee Sunday was held with tens of thousands of churches participating in dozens of countries - praying for those on the refugee highway and without a home. For more information on refugees and forcibly displaced peoples, [CLICK HERE](#).

### Quick links:

[REACT Services](#)

[Refugee Highway Partnership](#)

[Global Children's Forum](#)

### Upcoming Events for Prayer:

- **July 14-16, North American Refugee Ministry Roundtable, Toronto, Canada**
- **August 23-26, Middle East Majority Peoples, Leadership Team meeting, Grand Rapids, MI**

### Donate Now

We don't measure our success by how big WE are. We measure our success by how many resources we can LEVERAGE for the Kingdom. In 2009-10, the work we are doing has allowed us to leverage well over \$5 million towards advancing the Gospel worldwide. Yet our own budget remains a mere 3% of that. Would you consider giving a financial gift -- one that will leverage far greater impact for the Kingdom through our ministry?

REACT Services is not a recipient of any government funding and is dependent upon the financial contributions of those who believe in its mission to the vulnerable and least reached. This allows us to serve our "clients" -- from refugees and displaced peoples to persecuted and imprisoned believers.

We are most grateful for whatever financial investments you can make in support of REACT Services.

[CLICK HERE](#) for more information or to donate

## Global Children's Forum Children

The statistics are daunting; the context overwhelming. There are over 2 billion children with little or no access to hear the Good News of Jesus, primarily in very difficult countries. For the past three years, the Global Children's Forum (GCF) has been attempting to develop new collaborative strategies for the church as they seek to address this huge challenge.



In Beirut, Lebanon this past spring, the GCF held a global consultation that brought together nearly fifty organizations from 23 countries. Joint action groups worked together on the development of new resources, launching training programs, and promoting public advocacy. REACT is the consultant on partnering for this effort and helps guide the leadership team. Please pray for this important initiative! [CLICK HERE](#) for more information on the GCF.

## Religious Liberty Partnership

Nearly forty key leaders from 18 countries met in the annual Religious Liberty Partnership (RLP) Conference, in Cyprus this past March. REACT serves as the organizer and facilitator of this important network, a collaborative effort of Christian organizations in 18 countries around the world focused on ministering to the persecuted.

In this year's RLP conference a major joint document was released addressing the continuing loss of life in violence that has affected northern and central Nigeria since 1999, and in particular the recent murders of hundreds of men, women and children. Entitled the Cyprus Statement, it calls on the worldwide church to pray for Nigeria, provide practical humanitarian support and to support reconciliation efforts in that country. Contact the REACT Service office ([info@REACTServices.com](mailto:info@REACTServices.com)) for a copy of the Cyprus Statement.

REACT is excited to serve these organizations as they both advocate in the public square for human rights and bring needed assistance to persecuted believers and their families. These groups are also working together on Afghanistan, Morocco, and the Middle East.

REACT Services, 2309 1039 St SE, Mill-Creek, WA 98012  
Info@REACTServices.com  
425-218-4718

## Contact Us:

Website:

[REACT Services](#)

E-mail:

[info@reactservices.com](mailto:info@reactservices.com)